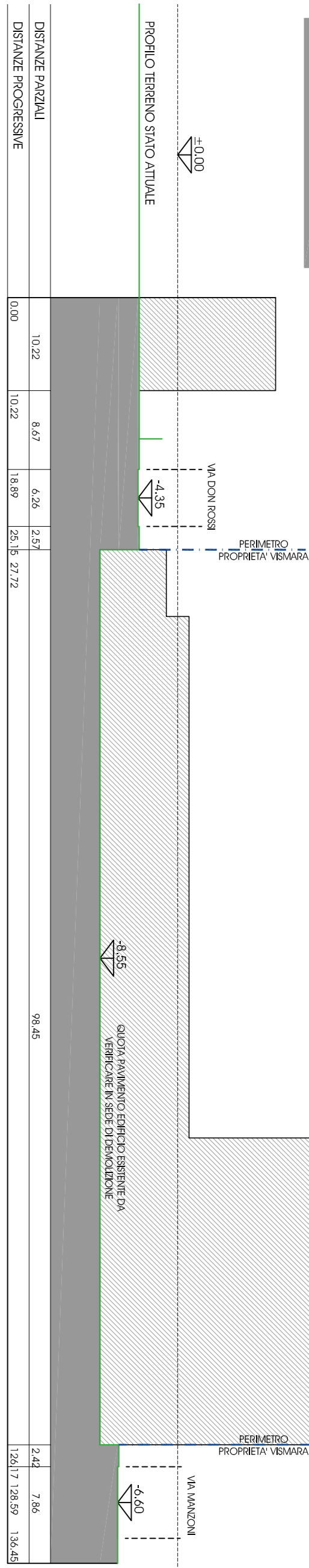
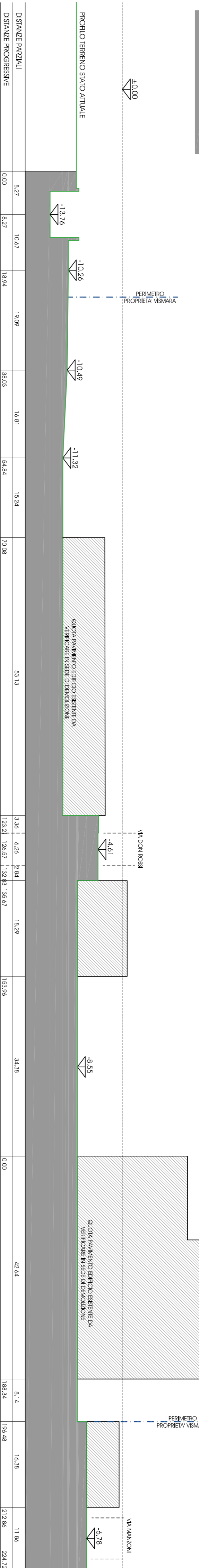


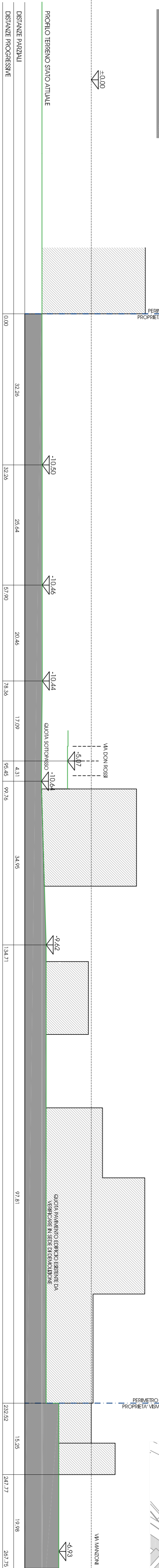
SEZIONE AA



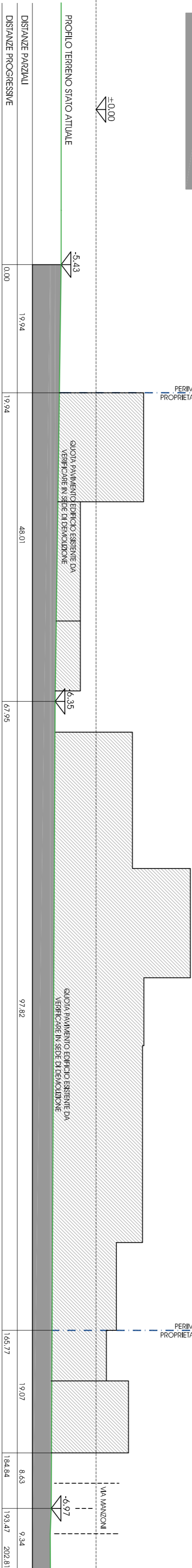
SEZIONE BB



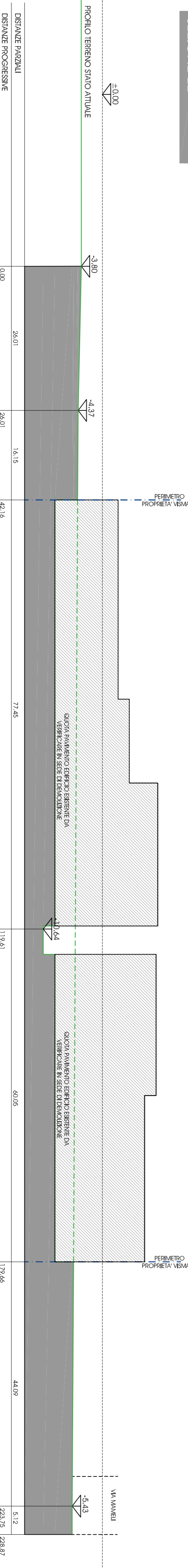
SEZIONE CC



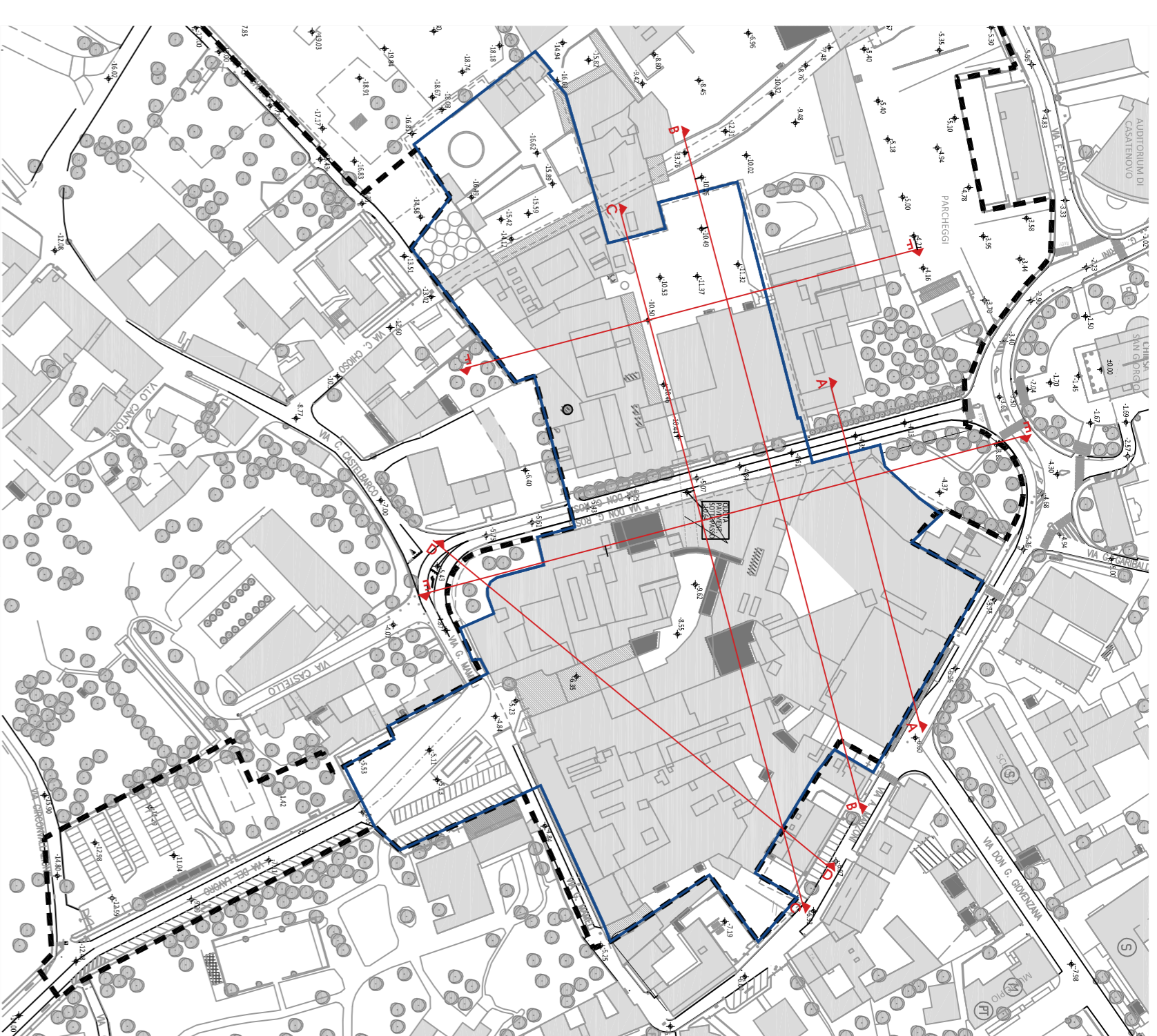
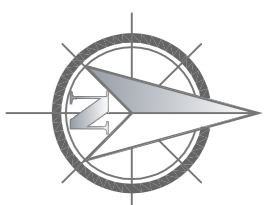
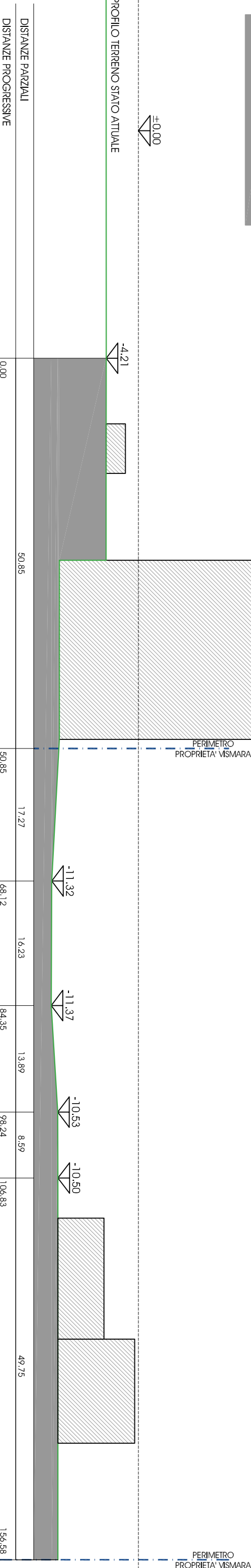
SEZIONE DD



SEZIONE EE



SEZIONE FF



PROGRAMMA INTEGRATO D'INTERVENTO
CASATENOVINO CENTRO
COMUNE DI CASATENOVINO - PROVINCIA DI LECCO



ELABORATO SEZIONI DELLO STATO ATTUALE

06

SCALA 1:5000

DATA DICEMBRE 2016

PROPRIETA' VISMARA S.P.A.

PROGETTISTI ARCH. GIUSEPPE CONTI - ARCH. ORLANDO FABRIZIO DURANTE



CRISTOFORO RICCIONE ARCHITETTI
P.P. PAVAN
Via Cassanese, 10 - 22021 CASATENOVINO (LC)
Tel. 0342/81111 - Fax 0342/81112
E-mail: cr@cr-pp.it - cr.pavan@cr-pp.it
C.A.P. 22021 - C.T. 0294328933
REDAZIONE GRAFICA - CINZIA SCOROTTONO